

Norfolk Buildings

Brighton





We know just the place...



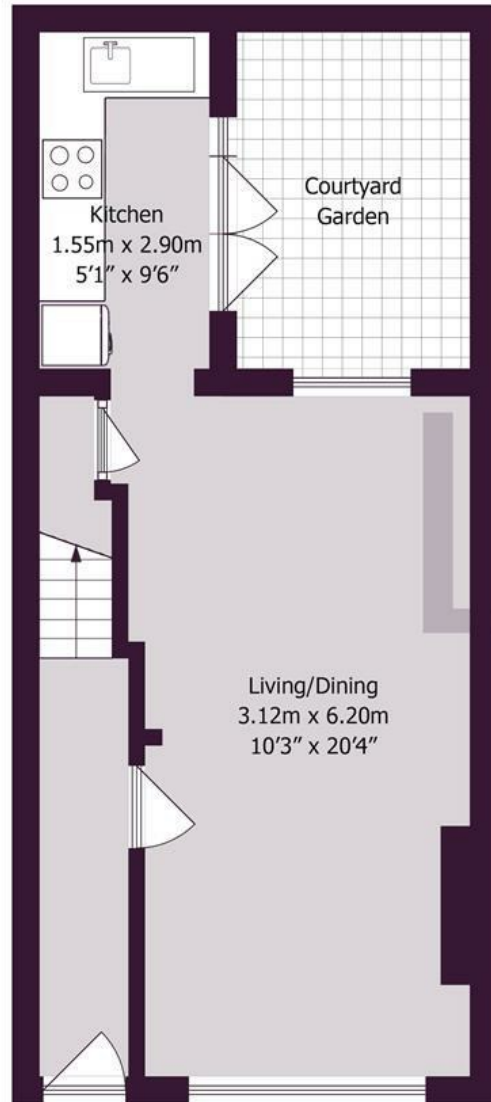
Lextons are delighted to offer to market this truly one off, period property. Built circa 1803 a three storey, three bedroom town house with a courtyard to the rear. Situated just off Brighton seafront in a delightful mews, you are conveniently located within a mile of Brighton's mainline station and Western Road with its wide range of extensive shops, restaurants, coffee houses and supermarkets.

The house is deceptively spacious, in excellent decorative order throughout and comprises; a spacious living room with stripped wooden flooring, a feature fireplace and beautiful sash windows, the separate kitchen has white gloss wall and base units with wooden work surfaces over and metro style tiling, as well as integrated appliances including; an induction hob with an extractor fan, oven, stainless steel sink with drainer and mixer tap and a fridge/ freezer. To the upper floors there are three double bedrooms and a modern family bathroom. The property also benefits from having a rear patio garden, gas central heating and is sold with no onward chain.

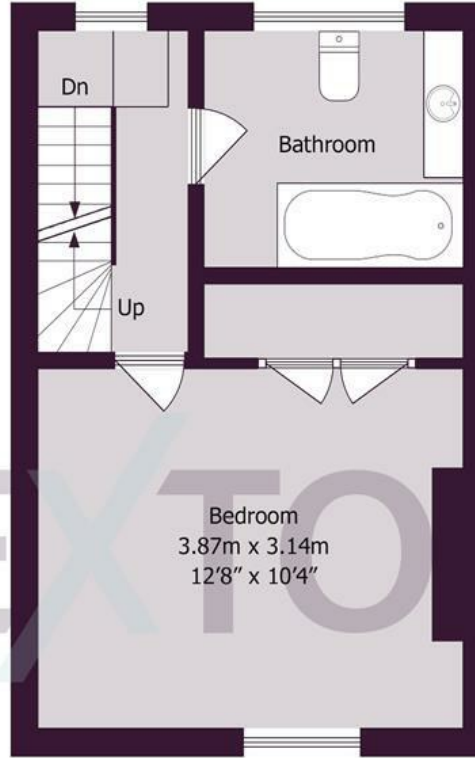
Norfolk Buildings is a small cul-de-sac of properties to be found off Sillwood Street and is within a few moments walk of Brighton city centre, seafront and promenade. Brighton mainline station is located in nearby Queens Road providing north-bound commuter links with London/the city. Renowned schools catering for all age groups are well represented throughout the local area.



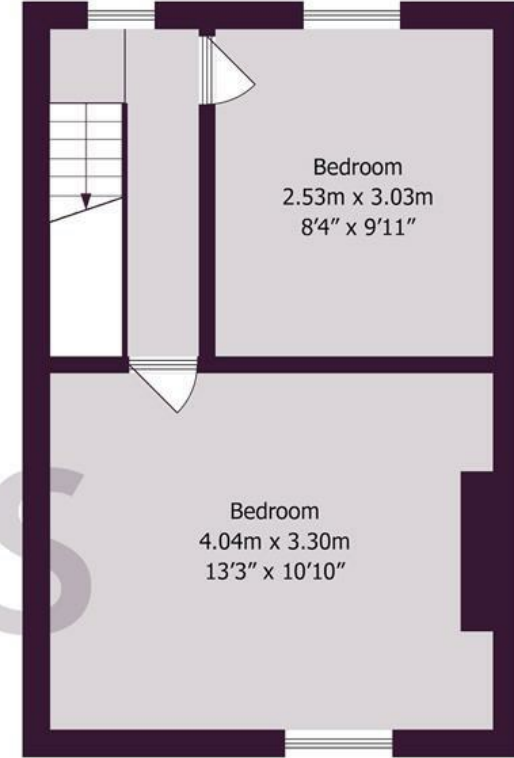
Ground Floor



First Floor



Second Floor



Approximate gross internal floor area 79 sq m/ 850 sq ft

Whilst every care has been taken to ensure accuracy, dimensions are approximate and for illustrative purposes only.

Created by Property Photography UK for Lextons. All rights reserved.

Meet us here...
35 South Road
Brighton
BN1 6SB

We aim to make our particulars both accurate and reliable. However they are not guaranteed; nor do they form part of an offer or contract. If you require clarification on any points then please contact us, especially if you're traveling some distance to view. Please note that appliances and heating systems have not been tested and therefore no warranties can be given as to their good working order.

